

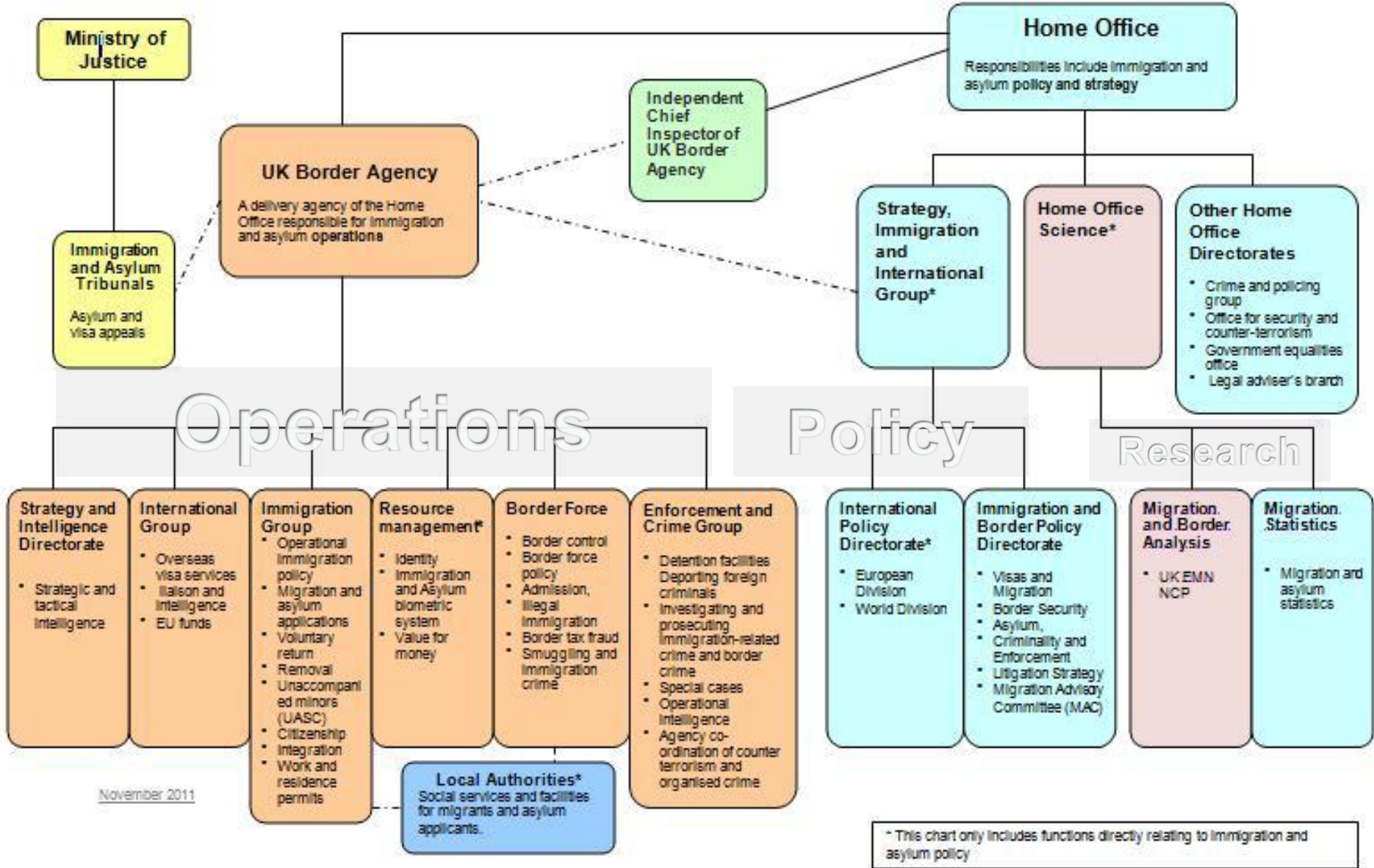


The role of scientific expertise in migration policy in the UK

Jon Simmons

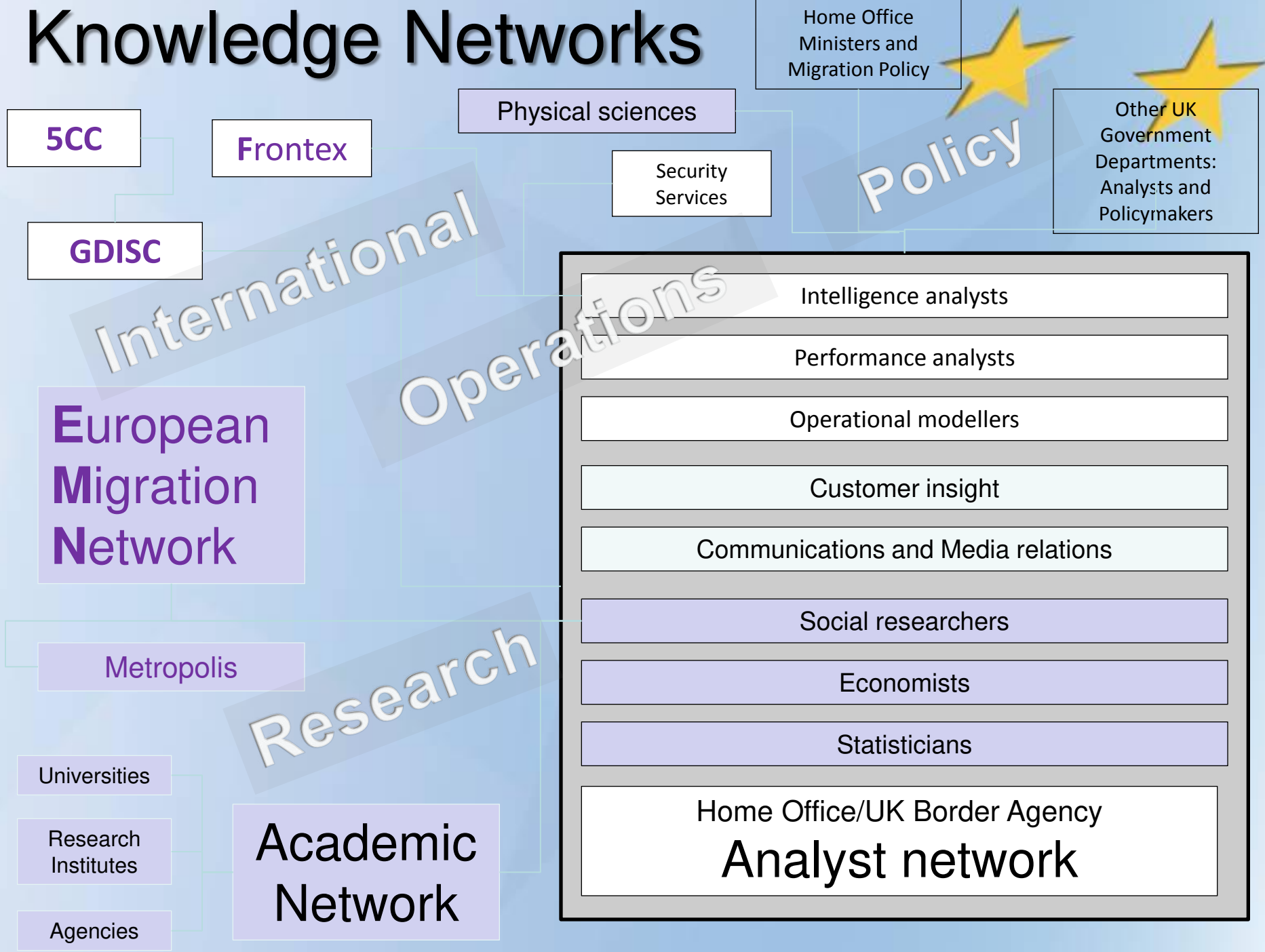
Deputy Director for
Migration and Border Analysis
Home Office Science
United Kingdom
Jon.Simmons@homeoffice.gsi.gov.uk

Institutional Framework for Immigration and Asylum Policies in the United Kingdom



November 2011

Knowledge Networks



5CC

Frontex

Physical sciences

Home Office
Ministers and
Migration Policy

Other UK
Government
Departments:
Analysts and
Policymakers

Security
Services

Policy

GDISC

International

Operations

European
Migration
Network

Intelligence analysts

Performance analysts

Operational modellers

Customer insight

Communications and Media relations

Social researchers

Economists

Statisticians

Metropolis

Research

Universities

Research
Institutes

Agencies

Academic
Network

Home Office/UK Border Agency
Analyst network

Analytical leadership in the Department

- ✘ Not a question of separation or proximity to policy-makers
- ✘ Independence and critical analysis are necessary regardless of the organisational arrangements
- ✘ Co-operation and leadership are critical
- ✘ Processes should facilitate networking, openness and transparency
...and in HO have been led by Deputy Director for Migration and Border Analysis
- ✘ Develop recognised roles to provide oversight and responsibility for specific areas of work
 - ✓ Requirements and objectives for research Head of Policy
 - ✓ Social research and analysis Deputy Director for Migration and Border Analysis
 - ✓ Publication of statistics Chief Statistician
 - ✓ Use of management information Head of Performance and Change Unit in the UK Border Agency
 - ✓ Economic appraisals and analysis Chief Economist

Networks are multi-faceted



- ✘ **In the department** – involving analysts in policy areas, operations and central science units
 - Regular contact between unit heads in the Knowledge Network (*relationship-building*)
 - Sandbox meetings to test emerging thinking or findings amongst analysts (*challenge and openness*)
 - Cockpit presentations to showcase research & analysis for senior policy makers (*innovation*)
- ✘ **Within government** – with other departments with migration interests
 - Either a standing meeting, or as needs arise (*“joined up government”*)
- ✘ **Nationally** – developing relationships with academics and researchers
 - Regular contact through newsletter, occasional conference or meetings (*independent views, new insights, other work*)
- ✘ **Internationally** – to access comparative information and research
 - Through EMN or FCC contacts (*external context, fresh thinking*)

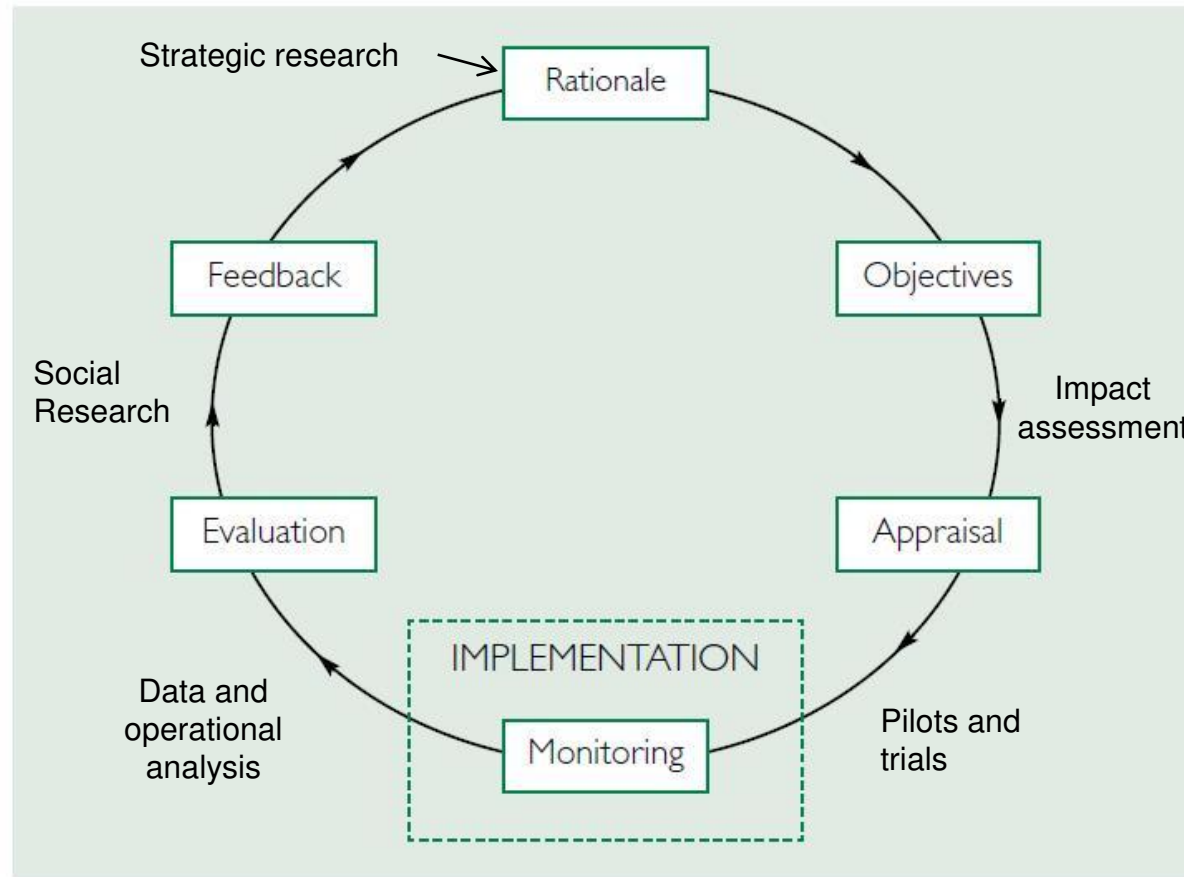
Commissioning should adopt a mixed-model



- ✦ We do some work in-house and some work using external contractors
- ✦ Some analysis and knowledge is better-sourced within the business
- ✦ Use the people and tools appropriate for the task
 - ✓ Establish where knowledge or skills lie and who has the resource
 - ✓ Some analysis of internal or sensitive data may be better done in-house
 - ✓ Significant additional data collection may require temporary external support
 - ✓ Longer-term projects might be better done through contractors
- ✦ Ongoing relationships with key-contractors facilitates access and close-working

In theory: The policy-making cycle

BOX 2: ROAMEF CYCLE



In practice 1:

Policy review of family migration

- ✘ Analysts were involved early on to help frame the requirements for research and the ‘art of the possible’ (money, timescales!)
- ✘ An “Intelligent customer” role within policy directorate advised analysts throughout and checked research relevance
- ✘ Early clarification of key statistics was essential to baseline other research and analysis consistently and set it in context
- ✘ A wide range of analyses were used to answer emerging policy questions – some longer-term research, some more immediate
- ✘ Cross-team working within Knowledge network but with clear responsibilities for individual products and overall programme
- ✘ A coherent set of outputs at the end, each different but as a whole providing a solid evidence-base for policy on family migration

In practice 2:

Family Migration research products

Public consultation on proposed policy options (Policy paper with evidence integrated throughout) [link](#) and analysis products:

✘✘ **Statistical summary** (annex to the public consultation)

✘✘ **Impact Assessment** (Economic analysis of options) *to be published*

✘✘ **Migrant Journey: Second report** (Internal long-term data analysis) [link](#)

✘✘ **Family Migration Evidence Base** (Focused evidence from a wide-range of sources – published statistics, internal data, ad hoc surveys, strategic sources) [link](#)

✘✘ **Marriage-related migration to the UK** (Externally-commissioned review of the academic literature on marriage migration) [link](#)

✘✘ **Summary of consultation responses** (both online survey and write-in responses) *to be published*

Together providing a wide-ranging evidence base since used in speeches ([link](#)), parliamentary debates etc