



Immigration and Naturalisation
Service
*Ministry of the Interior and
Kingdom Relations*

Good practices for successful
cooperation of research and
policy making:

The case of the Information and
Analysis Centre of the Dutch
Immigration Service

By Mr. Maarten Vleugel

Content



- ✧ The Immigration- and Naturalisation Service (IND)
- ✧ The IND and Ministry of the Interior
- ✧ IND organisational chart
- ✧ Staff Directorate for Implementation and Policy
- ✧ IND Information and Analysis Centre
- ✧ Examples of successful cooperation of research and policy making
- ✧ Effective contributors to succes
- ✧ Methodological & Practical challenges

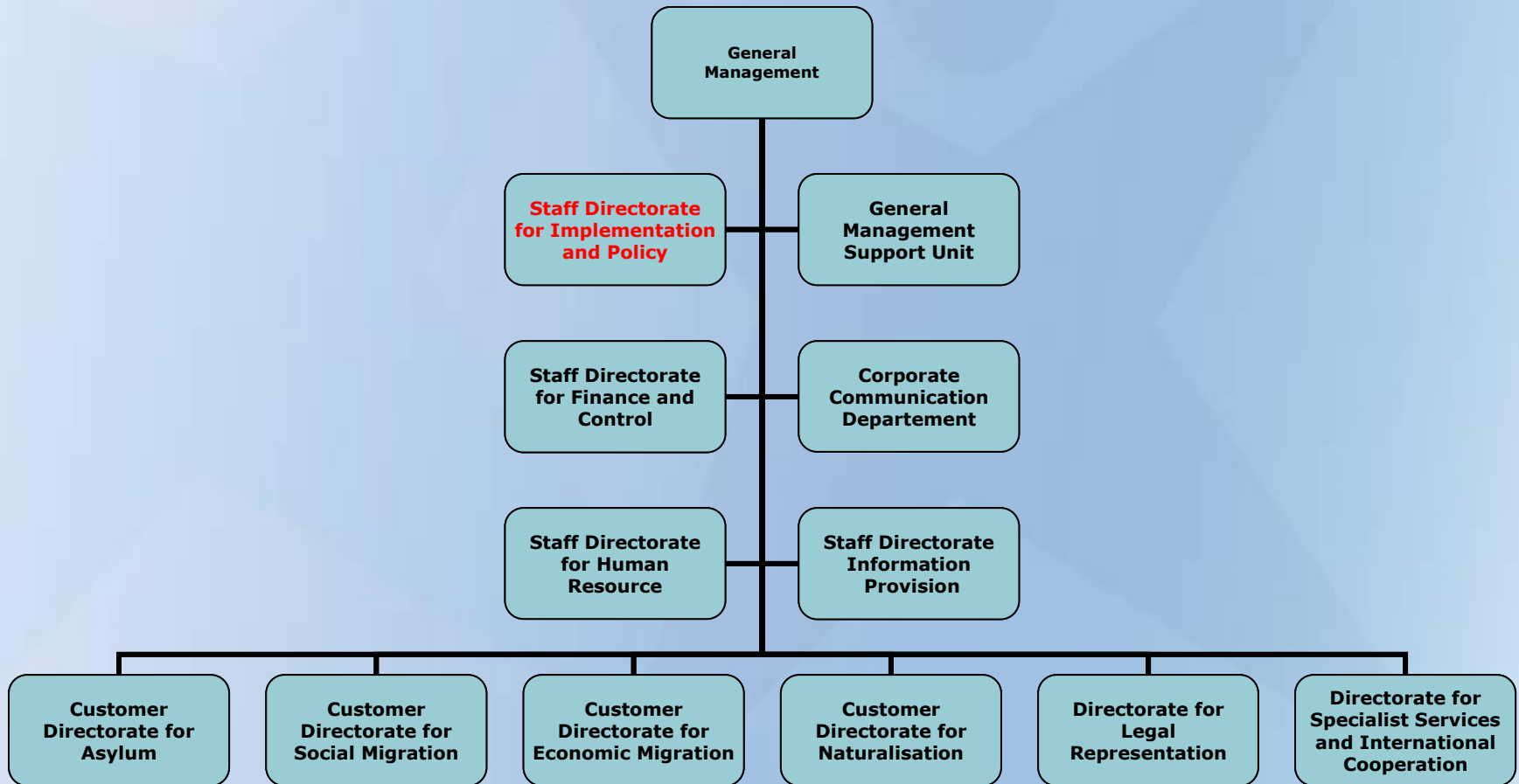
The Immigration- and Naturalisation Service (IND)

- ✘✘ An executing agency of the Ministry of the Interior and Kingdom relations
- ✘✘ Takes decisions on residence permits on behalf of the Minister for Immigration and Asylum
- ✘✘ Takes decisions on naturalisation requests on behalf of the Minister of the Interior and Kingdom relations
- ✘✘ Charged with implementing policy in respect of foreign nationals (Aliens Act 2000 & Dutch Nationality Act)
- ✘✘ Around 3000 employees
- ✘✘ 9 main offices across the Netherlands
- ✘✘ 9 extra customer offices in town halls

The IND and Ministry of the Interior

- ✘✘ The Ministry makes policy, the IND implements & executes policy and influences policy making
- ✘✘ The Ministry finances the IND, the IND uses its budget for its tasks
- ✘✘ The Ministry supports the Ministers in parliament, the IND supports the Ministry in supporting the Ministers
- ✘✘ The Ministers can be held responsible in parliament for the activities of the IND

IND organisational chart



Staff Directorate for Implementation and Policy

- ✧ One Director and one Deputy Director
- ✧ Six departments
 - ✓ Policy department on Asylum, Admissions, Supervision and Return
 - ✓ Policy department on Social Migration
 - ✓ Policy department on Economic Migration & Naturalisation
 - ✓ Department on Administrative Enforcement
 - ✓ Department on Product Quality and Customer relations
 - ✓ Information and Analysis Centre
- ✧ 140 employees

IND Information and Analysis Centre (INDIAC) I

- ✖ Established in 1995
- ✖ One head of department and one deputy head
- ✖ 30 employees
- ✖ Our customers are:
 - ✓ the IND
 - ✓ the Ministry of the Interior
 - ✓ governmental partners of the IND
 - ✓ Dutch parliament
 - ✓ Universities and other research institutions
 - ✓ European Commission

IND Information and Analysis Centre (INDIAC) II

Three divisions with different tasks:

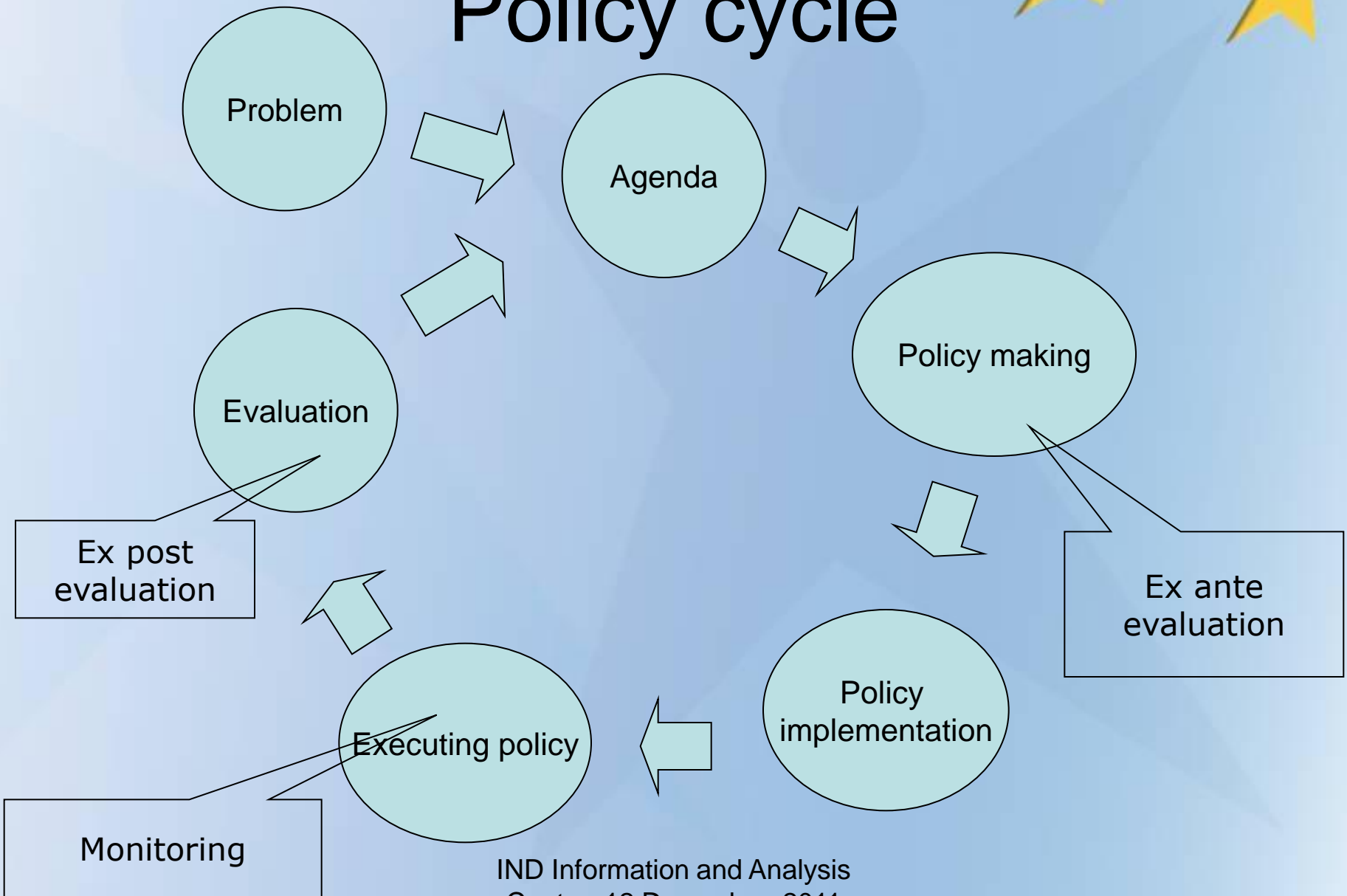
- ✧ People Smuggling & Human Trafficking Information Group
 - ✓ Collect, analyse and exchange information
 - ✓ Prevention
 - ✓ Support of criminal investigations
- ✧ Contact Point for the European Migration Network (EMN)
 - ✓ Analysis reports, synthesis reports, ad hoc queries
- ✧ Classical INDIAC
 - ✓ Policy evaluation
 - ✓ Information analysis
 - ✓ Supervision and coordination of research
 - ✓ International information exchange

IND Information and Analysis Centre (INDIAC) III

On Policy Evaluation

- ✓ Contribution to policy cycle
- ✓ Ex post evaluation (Gender and alien policy)
- ✓ Ex ante evaluation (Unaccompanied Minors, biometrics)
- ✓ Ex durante evaluation/monitoring (Highly skilled migrants)

Policy cycle



IND Information and Analysis Centre (INDIAC) IV



✖ On Information Analysis

- ✓ Influx/cohort analysis
- ✓ Specific country reports (Iraq, Somalia, Afghanistan)
- ✓ Ad hoc questions (Parliament, the Ministry, from within the IND, etc.)
- ✓ Trend reports (asylum, migration, visas and naturalisation)

IND Information and Analysis Centre (INDIAC) V

✘ On Supervision and Coordination of Research

- ✓ Guide research within the IND
- ✓ Guide research by universities and institutes
- ✓ Coordinate research of the Netherlands Court of Audit
- ✓ Contribute to programming of research in the field of migration, asylum and naturalisation

✘ On International Information Exchange

- ✓ Regulation on migration statistics
- ✓ Agreement with National Statistics Bureau
- ✓ UNHCR, FRONTEX, EASO, etc.
- ✓ Twinning projects

IND Information and Analysis Centre (INDIAC) VI



- ✖ INDIAC uses its studies and analysis to:
 - ✓ Generate insights that benefits the IND and its (international) partners
 - ✓ Tighten up or adjust asylum, migration or naturalisation policy
 - ✓ Render account to third parties
 - ✓ Meet international obligations
 - ✓ Contribute to the prevention and combating of people smuggling, human trafficking and other migration related crime
 - ✓ Provide recognizable and objective information for the benefit of the alien policy and its implementation

Examples of successful cooperation of research and policy making I

✖✖ Ex ante analysis or quick scans

- ✓ During the process of creating new policy (or law)
- ✓ Bring all the implementers/executioners together
- ✓ Analyse the consequences of the future policy
- ✓ Adjust the new policy accordingly
- ✓ Prepare for implementation

✖✖ Policy Analysis Reports of the EMN

- ✓ Input from all policy departments and the Ministry
- ✓ Synthesis report is being used by the Minister for his European strategy

✖✖ Ex post evaluation on different topics

- ✓ Using new methods of gathering data (text mining)
- ✓ Adjust policy due to findings

Examples of successful cooperation of research and policy making II

- ✧ Providing entrance to data to external researchers
 - ✓ Get permission of the general director or the Minister
 - ✓ Arrange a desk, a computer and access to office and the internal network
 - ✓ Provide case files
 - ✓ Teach external researchers how to read case files and how to use specific information systems
 - ✓ Read and comment draft versions of findings/reports
 - ✓ Prepare the IND and Ministry on findings
 - ✓ Reports can lead to policy changes

- ✧ Close cooperation with the national statistics bureau
 - ✓ Leads to better statistics on migration and asylum
 - ✓ Prepares the IND (and Ministry) for independent publications by the statistics bureau

- ✧ Short topic studies
 - ✓ Studies on current topics of high political/public interest (migration during the Arabic Spring)
 - ✓ Many updates that can be created quickly

Effective contributors to succes



- ✘✘ Close relations within the policy directorate of the IND
- ✘✘ Close relations between the policy directorate and the Ministry
- ✘✘ Clear expectations
- ✘✘ Respect and acceptance of research results
- ✘✘ Hierarchical support
- ✘✘ Having a reliable brand name
- ✘✘ Qualified staff